



True® Dorval FR

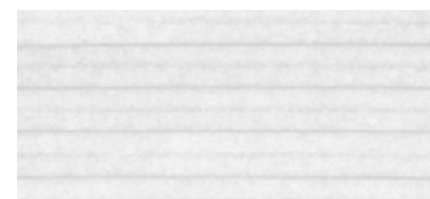
Discover the beauty of semi-transparent fabric True® Dorval FR, crafted from post-consumer recycled polyester. Enjoy its gentle diffusion of natural light while benefiting from its flame-retardant properties, meeting the European B1 standard. Available in nine timeless colours, it's perfect for both residential and contract spaces.

fabric specifications

| composition | construction | transparency | form of cell | cell size | weight (g/m ²) | thick-ness (mm) | colour fastness (ISO 105 B02) | Oeko-Tex standard 100 | flame retardant | moisture resistant | pvc/halogen free |
|-----------------------------|---------------------------|------------------|--------------|-----------|----------------------------|-----------------|-------------------------------|-----------------------|-----------------|--------------------|------------------|
| 85% Recycled PET 15% PES | spunlace non-woven fabric | semi-transparent | D-shape | 25 | 176 | 0,18 | 6 | yes | yes | yes | yes |
| | | | | 32 | 151 | 0,19 | | | | | |
| | | | | 45 | 151 | 0,19 | | | | | |

solar heat and light control properties

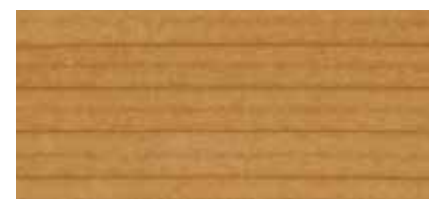
| design | colour | cell size (mm) | fabric width (cm) | Rv | Av | Tv | Rs | As | Ts | Tuv | g _{tot} value | Fc-value | FC-class |
|--------|-------------|----------------|-------------------|-----|-----|-----|-----|-----|-----|-----|------------------------|----------|----------|
| 752-01 | white | 25 / 32 / 45 | 300 / 300 / 366 | 64% | 2% | 34% | 61% | 6% | 33% | 11% | 0,38 | 0,64 | 3 |
| 752-02 | cream | 25 / 32 / 45 | 300 / 300 / 366 | 65% | 15% | 20% | 62% | 17% | 22% | 3% | 0,37 | 0,63 | 3 |
| 752-03 | moonstruck | 25 / 32 / 45 | 300 / 300 / 366 | 65% | 16% | 20% | 61% | 17% | 22% | 4% | 0,37 | 0,63 | 3 |
| 752-04 | fungi | 25 / 32 / 45 | 300 / 300 / 366 | 60% | 27% | 13% | 57% | 28% | 15% | 4% | 0,38 | 0,65 | 3 |
| 752-05 | dark grey | 25 / 32 / 45 | 300 / 300 / 366 | 59% | 32% | 8% | 56% | 34% | 10% | 3% | 0,39 | 0,66 | 3 |
| 752-06 | dark navy | 25 / 32 / 45 | 300 / 300 / 366 | 55% | 41% | 4% | 52% | 43% | 5% | 1% | 0,40 | 0,68 | 3 |
| 752-07 | straw | 25 / 32 / 45 | 300 / 300 / 366 | 61% | 22% | 18% | 58% | 20% | 22% | 5% | 0,38 | 0,65 | 3 |
| 752-08 | desert sage | 25 / 32 / 45 | 300 / 300 / 366 | 62% | 21% | 17% | 58% | 23% | 19% | 4% | 0,38 | 0,65 | 3 |
| 752-09 | light blue | 25 / 32 / 45 | 300 / 300 / 366 | 67% | 8% | 24% | 64% | 10% | 26% | 4% | 0,37 | 0,62 | 3 |



752-01
WHITE



752-04
FUNGI



752-07
STRAW



752-02
CREAM



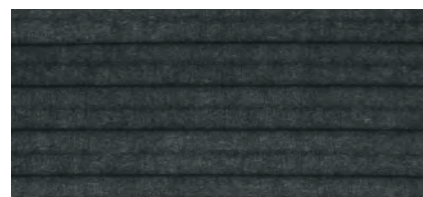
752-05
DARK GREY



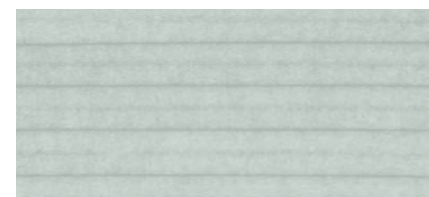
752-08
DESERT DAGE



752-03
MOONSTRUCK



752-06
DARK NAVY



752-09
LIGHT BLUE