

7410 - 0100
SNOW WHITE 20 25 32 45



7412 - 0120
CREAM 25



7411 - 0110
PEARL 20 25



7413 - 0130
SAND 20 25



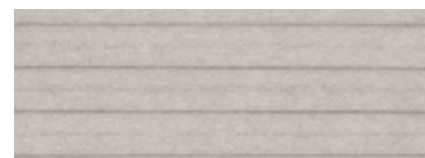
7414 - 0140
CAMEL 25 32 45



7415 - 0150
DUNE 20 25



7416 - 0160
DAWN 25 32 45



741-05
PEBBLE 25



7434 - 0340
JAFFA 25 45



7436 - 0360
YELLOW 25 32



741-21
MANGO 25



7437 - 0370
MELON 25 32



7433 - 0330
FLAME 25 45



7430 - 0300
CORAL 25 32



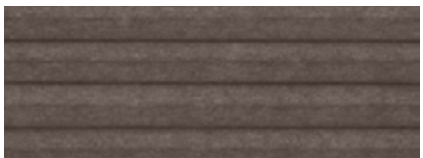
7429 - 0290
AUBERGINE 25



741-20
ASH ROSE 25



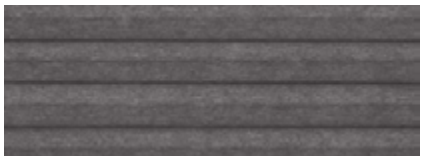
7417 - 0170
ASH 25 32 45



7418 - 0180
COFFEE 25 32



7420 - 0200
RAVEN 20 25 32



7421 - 0210
IRON 25 45



741-02
MIST 20 25



7423 - 0230
MOUSE 20 25 32 45



741-06
DUST 20 25 32



7422 - 0220
STEEL 25



7441 - 0410
GRASS 25 45



741-23
SAGE 25



741-03
MINT 25 32



7438 - 0380
ESSENCE 25



7428 - 0280
ECLIPSE 25



7427 - 0270
JEANS 25 32



7425 - 0250
OCEAN 25



7424 - 0240
CLOUD 25 32 45

Palma

Enjoy the modern elegance of Palma, featuring subtle and contemporary colours. With its insulating honeycomb structure and reflective white backside, Palma is an essential fabric for energyconscious collections. Experience year-round energy savings and a healthier indoor climate. Available in semi-transparent in a palette of 32 stylish colours.

fabric specifications

composition	construction	transparency	form of cell	cell size	weight (g/m ²)	thick-ness (mm)	colour fastness (ISO 105 B02)	Oeko-Tex standard 100	flame retardant	moisture resistant	pvc/halogen free
100% PES	pointbonded non-woven fabric	semi-transparent	O-shape	20 mm	150	0,21	7	yes	no	yes	yes
			D-shape	25 mm	144	0,21					
			D-shape	32 mm	154	0,26					
			D-shape	45 mm	144	0,21					

solar heat and light control properties

design	colour	cell size (mm)	fabric width (cm)	Rv	Av	Tv	Rs	As	Ts	Tuv	g _{tot} value	Fc-value	FC-class
7410	snow white	20 / 25 / 32 / 45	300 / 300 / 300 / 366	53%	2%	45%	51%	5%	44%	20%	0,41	0,70	3
7411	pearl	20 / 25	300 / 300	58%	5%	37%	55%	8%	37%	8%	0,40	0,67	3
7412	cream	25	300	59%	6%	35%	55%	10%	35%	6%	0,40	0,67	3
7413	sand	20 / 25	300 / 300	59%	10%	31%	56%	10%	34%	7%	0,39	0,67	3
7414	camel	25 / 32 / 45	300 / 300 / 366	53%	12%	35%	51%	13%	36%	11%	0,41	0,70	3
7415	dune	20 / 25	300 / 300	54%	12%	34%	51%	14%	35%	10%	0,41	0,69	3
7416	dawn	25 / 32 / 45	300 / 300 / 366	54%	9%	37%	51%	11%	38%	13%	0,41	0,69	3
7417	ash	25 / 32 / 45	300 / 300 / 366	47%	34%	19%	45%	33%	22%	7%	0,43	0,72	3
7418	coffee	25 / 32	300 / 300	45%	42%	13%	43%	40%	17%	6%	0,43	0,73	3
7420	raven	20 / 25 / 32	300 / 300 / 300	45%	44%	11%	42%	45%	13%	6%	0,43	0,73	3
7421	iron	25 / 45	300 / 366	59%	6%	35%	55%	10%	35%	6%	0,40	0,67	3
7422	steel	25	300	50%	29%	21%	49%	26%	25%	8%	0,41	0,70	3
7423	mouse	20 / 25 / 32 / 45	300 / 300 / 300 / 366	56%	14%	30%	54%	13%	33%	9%	0,40	0,68	3
7424	cloud	25 / 32 / 45	300 / 300 / 366	57%	8%	35%	54%	9%	37%	9%	0,40	0,68	3
7425	ocean	25	300	50%	33%	17%	51%	23%	26%	6%	0,41	0,69	3
7427	jeans	25 / 32	300 / 300	12%	73%	15%	27%	48%	25%	7%	0,49	0,82	4
7428	eclipse	25	300	47%	38%	15%	46%	35%	19%	6%	0,42	0,72	3
7429	aubergine	25	300	50%	38%	12%	51%	28%	21%	5%	0,41	0,69	3
7430	coral	25 / 32	300 / 300	44%	43%	13%	46%	30%	24%	5%	0,42	0,72	3
7433	flame	25 / 45	300 / 366	46%	36%	18%	49%	20%	31%	7%	0,42	0,70	3
7434	jaffa	25 / 45	300 / 366	51%	28%	21%	52%	17%	31%	6%	0,40	0,69	3
7436	yellow	25 / 32	300 / 300	52%	20%	28%	51%	16%	33%	7%	0,41	0,69	3
7437	melon	25 / 32	300 / 300	57%	11%	32%	54%	12%	34%	7%	0,40	0,68	3
7438	essence	25	300	58%	10%	32%	54%	13%	33%	5%	0,40	0,68	3
7441	grass	25 / 45	300 / 366	53%	18%	29%	51%	18%	31%	8%	0,41	0,69	3
741-02	mist	20 / 25	300	54%	13%	33%	51%	14%	35%	11%	0,41	0,69	3
741-03	mint	25 / 32	300 / 300	55%	16%	29%	53%	15%	32%	7%	0,40	0,68	3
741-05	pebble	25	300	53%	15%	32%	50%	16%	34%	9%	0,41	0,70	3
741-06	dust	20 / 25 / 32	300 / 300 / 300	48%	28%	24%	47%	26%	27%	10%	0,42	0,72	3
741-20	ash rose	25	300	51%	21%	28%	49%	19%	32%	10%	0,41	0,70	3
741-21	mango	25	300	57%	10%	33%	54%	12%	34%	7%	0,40	0,68	3
741-23	sage	25	300	52%	22%	26%	49%	23%	28%	8%	0,41	0,70	3