



5612E - 5612  
IVORY 



5600E - 5600  
WHITE 



5615E - 5615  
LIGHT GREY 



5603E - 5603  
BROWN 

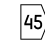


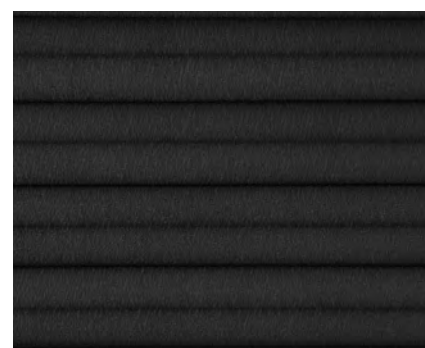
5613E - 5613  
BEIGE 



5629E - 5629  
OYSTER 



5610E - 5610  
DARK GREY 



5611E - 5611  
BLACK 



5623E - 5623  
CREAM 



5609E - 5609  
GREY 

# Edmonton DT

Create a timeless and classic look with non-transparent Edmonton DT fabric. This woven fabric features a range of stylish colours on the front, while the white backside offers high performance, energy-saving benefits. Experience a comfortable indoor space with enhanced acoustics.

## fabric specifications

composition	construction	transparency	form of cell	weight (g/m <sup>2</sup> )	thick-ness (mm)	colour fastness (ISO 105 B02)	Oeko-Tex standard 100	flame retardant	moisture resistant	pvc/ halogen free
100% PES	woven fabric	non-transparent	D-shape	206	0,17	5-6	yes	no	yes	yes

## solar heat and light control properties

design	colour	cell size (mm)	fabric width (cm)	Rv	Av	Tv	Rs	As	Ts	Tuv	g <sub>tot</sub> value	Fc-value	FC-class
5600E	white	45	366	67%	3%	30%	66%	5%	29%	24%	0,36	1,00	3
5603E	brown	45	366	59%	38%	7%	58%	32%	9%	4%	0,38	0,64	3
5609E	grey	45	366	61%	20%	18%	61%	18%	21%	14%	0,37	0,63	3
5610E	dark grey	45	366	63%	23%	14%	61%	22%	17%	10%	0,37	0,63	3
5611E	black	45	366	52%	46%	2%	51%	47%	3%	2%	0,4	0,68	3
5612E	ivory	45	366	63%	3%	34%	61%	5%	34%	24%	0,38	0,64	3
5613E	beige	45	366	63%	3%	34%	62%	5%	34%	24%	0,37	0,63	3
5615E	light grey	45	366	58%	25%	18%	57%	24%	20%	12%	0,39	0,66	3
5623E	cream	45	366	62%	6%	32%	61%	7%	32%	21%	0,38	0,64	3
5629E	oyster	45	366	62%	7%	31%	60%	9%	31%	22%	0,38	0,64	3