



Baltimore

Encounter the sophisticated look of Baltimore, a truly unique semi-transparent fabric. Its honeycomb structure with a white non-woven back diffuses light beautifully, creating a luxurious atmosphere. Choose from six natural colours to enhance your home or office with timeless elegance.

fabric specifications

| composition | construction | transparency | form of cell | cell size | weight (g/m²) | thickness (mm) | colour fastness (ISO 105 B02) | Oeko-Tex standard 100 | flame retardant | moisture resistant | pvc/halogen free |
|-------------|--|------------------|--------------|-----------|---------------|----------------|-------------------------------|-----------------------|-----------------|--------------------|------------------|
| 100% PES | spunlace non-woven fabric + printed textile front side | semi-transparent | D-shape | 25 mm | 235 | 0,37 | 4-5 | yes | no | yes | yes |
| | | | | 45 mm | 250 | 0,29 | | | | | |

solar heat and light control properties

| design | colour | cell size (mm) | fabric width (cm) | Rv | Av | Tv | Rs | As | Ts | Tuv | gtot value | Fc-value | FC-class |
|--------|--------|----------------|-------------------|-----|-----|-----|-----|-----|-----|-----|------------|----------|----------|
| 563-01 | white | 25 / 45 | 300 / 366 | 65% | 2% | 33% | 63% | 4% | 33% | 21% | 0,37 | 0,63 | 3 |
| 563-02 | cream | 25 / 45 | 300 / 366 | 68% | 2% | 30% | 66% | 4% | 30% | 18% | 0,36 | 0,61 | 3 |
| 563-03 | sand | 25 / 45 | 300 / 366 | 68% | 6% | 26% | 66% | 7% | 27% | 14% | 0,36 | 0,61 | 3 |
| 563-04 | mocca | 25 / 45 | 300 / 366 | 65% | 16% | 19% | 64% | 16% | 20% | 10% | 0,37 | 0,62 | 3 |
| 563-05 | ash | 25 / 45 | 300 / 366 | 66% | 8% | 26% | 65% | 9% | 26% | 16% | 0,36 | 0,62 | 3 |
| 563-06 | iron | 25 / 45 | 300 / 366 | 59% | 23% | 18% | 58% | 23% | 19% | 12% | 0,38 | 0,65 | 3 |

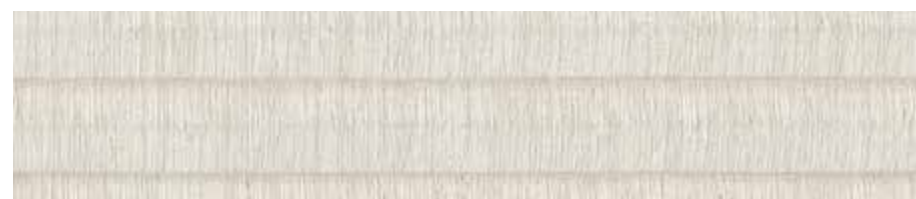
*max drop in 25 mm = 100 cells



563-02E - 563-02
CREAM



563-01E - 563-01
WHITE



563-03E - 563-03
SAND



563-05E - 563-05
ASH



563-04E - 563-04
MOCCA



563-06E - 563-06
IRON



honeycell®