

Oxford 25 mm

Transparent, high quality Honeycell woven fabric Oxford has a coarse weaving texture that creates a refined linen look. Thanks to the honeycomb structure, fabric Oxford has an insulating effect. It allows the fabric to optimally contribute to a comfortable indoor climate. The fabric is available in 10 trendy, natural colour tones.

fabric specifications

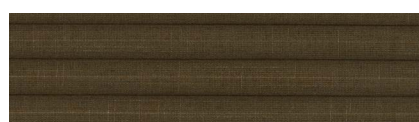
composition	construction	transparency	form of cell	cell size	weight (g/m ²)	thickness (mm)	colour fastness (ISO 105 B02)	metalized	Oeko-Tex standard 100	flame retardant	moisture resistant	pvc/halogen free
100% PES	woven fabric	transparent	D-shape	25 mm	288	0,24	4-5	no	yes	no	yes	yes
				45 mm								

solar heat and light control properties

design	colour	cell size (mm)	fabric width (cm)	Rv	Av	Tv	Rs	As	Ts	Tuv	gtot value	Fc-value	FC-class
5220	snow white	25 mm	300	50%	17%	33%	51%	15%	34%	-	0,44	0,63	3
5221	off-white	25 mm	300	54%	16%	30%	54%	10%	36%	16%	0,43	0,62	3
5222	beach beige	25 / 45 mm	300	55%	19%	26%	56%	11%	33%	10%	0,42	0,60	3
5223	cacao	25 mm	300	51%	27%	22%	52%	20%	28%	12%	0,44	0,62	3
5224	espresso	25 mm	300	49%	34%	17%	49%	36%	15%	10%	0,44	0,63	3
5225	moon rock	25 / 45 mm	300	50%	30%	20%	50%	28%	22%	11%	0,44	0,63	3
5226	stone blue	25 mm	300	51%	32%	17%	51%	24%	25%	9%	0,44	0,62	3
5227	charcoal	25 mm	300	47%	35%	18%	45%	36%	19%	10%	0,46	0,66	3
5228	pebble	25 mm	300	53%	25%	22%	52%	21%	27%	11%	0,43	0,62	3
5229	light grey	25 / 45 mm	300	53%	23%	24%	56%	13%	31%	11%	0,42	0,60	3



5220



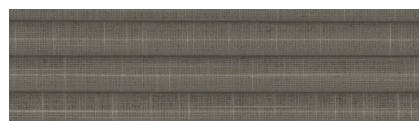
5224



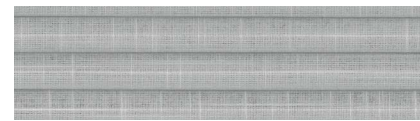
5228



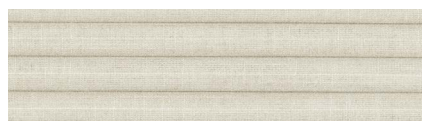
5221



5225



5229



5222



5226



5223



5227