



# Dawson

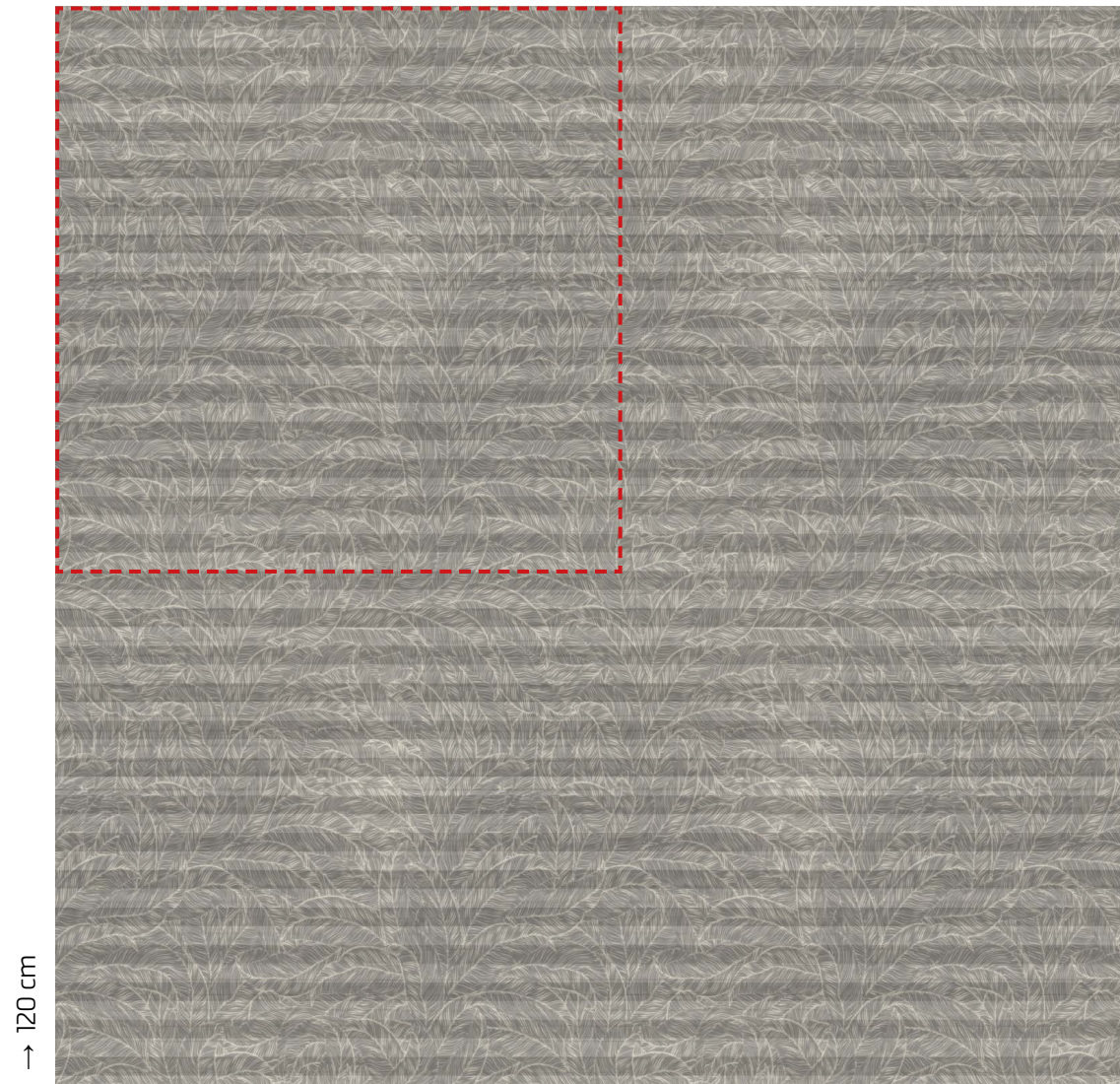
Semi-transparent Honeycell fabric Dawson has the same quality as basic cloth Rioja. The fabric has a modern expressive print of leaves. Due to its 25 mm cellular structure and white backing, fabric Dawson has excellent insulation and reflection qualities. This makes the material the perfect combination of both functionality and atmosphere. Dawson 25mm is available in four colours.

## fabric specifications

composition	construction	transparency	pattern dimension	form of cell	weight (g/m <sup>2</sup> )	thickness (mm)	colour fastness (ISO 105 B02)	metalized	Oeko-Tex standard 100	flame retardant	moisture resistant	pvc/halogen free
100% PES	spunlace non-woven fabric + digital print	semi-transparent	63 x 63 cm	O-shape	167	0,26	4-5	no	yes	no	yes	yes

## solar heat and light control properties

design	colour	cell size (mm)	fabric width (cm)	Rv	Av	Tv	Rs	As	Ts	Tuv	gtot value	Fc-value	FC-class
567-01	greige	25mm	250	69%	21%	10%	69%	14%	17%	7%	0,35	0,50	2
567-02	moon rock	25mm	250	60%	34%	6%	60%	33%	7%	-	0,39	0,56	2
567-03	cinder	25mm	250	66%	23%	11%	67%	15%	18%	8%	0,36	0,52	2
567-04	charcoal	25mm	250	60%	34%	6%	60%	33%	7%	-	0,39	0,56	2



→ 120 cm

→ 120 cm

567-01

----- Pattern dimension (w x h) : 63 x 93 cm.



567-02



567-04



567-03